



## 4100 and 4200 Series Dual-Handed Swingbolt Lock

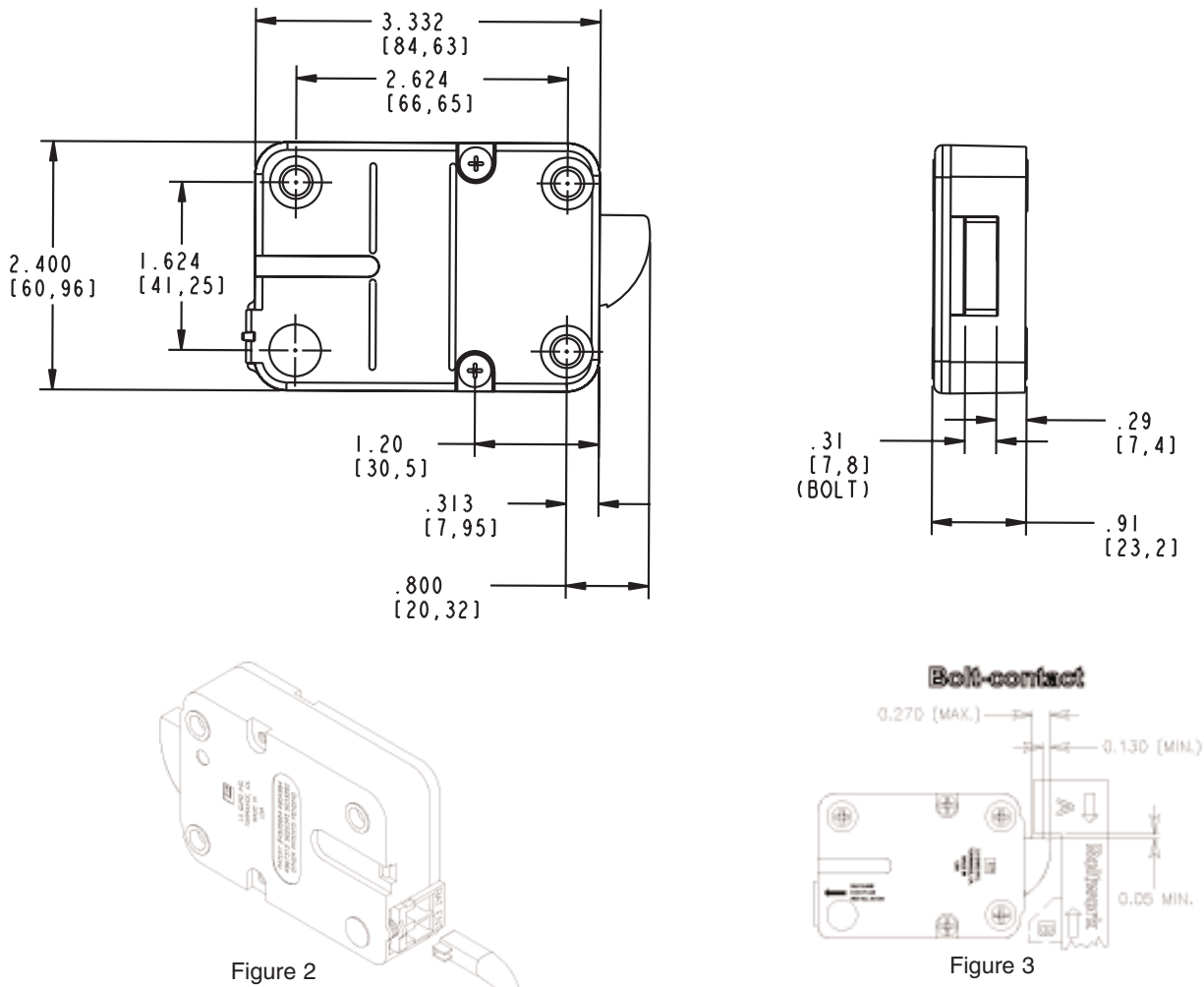
### INSTALLATION INSTRUCTIONS

The Quality System at LA GARD INC is ISO 9001 certified. In order to maintain this high quality standard and to ensure a problem free application, please read this guide thoroughly before mounting the LA GARD 3370 mechanical lock.

#### SAFEGUARDS FOR MOUNTING THE LOCK

- ① As soon as an electronic lock has been mounted, no more welding can be done on the safe.
- ② Keep metal dust, filings, ect. away from the lock.
- ③ Never remove the lock cover, this voids LA GARD's warranty policy.
- ④ Never oil, grease, lubricate or paint the lock.
- ⑤ Keep cables away from sharp edges and moving parts.
- ⑥ Never carry Keypads or Locks by holding onto the cable.
- ⑦ Use ALKALINE batteries only. (LA GARD recommends Eveready™ or Duracell™)

#### 4100 and 4200 Series Dual-Handed Swingbolt Lock Dimensional Drawing



- ① Press the locks snap connector toward the bottom of the lock. Carefully insert the entry cable plug into the lock at the "ENT" position, see Figure 2.

- ② The blocking part “A” of Boltwork should exert pressure on the entire width of the lockbolt. In the locked position the boltwork **MUST NOT** place pressure on the lockbolt.

**NOTE:** In case of boltwork construction where two blocking parts are moving opposite one another, the one facing the round side of the lockbolt “B” should be cut-off to avoid jamming of lockbolt, see Figure 3.

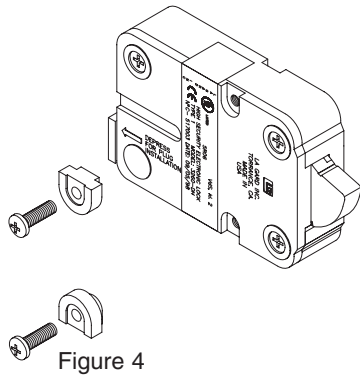


Figure 4

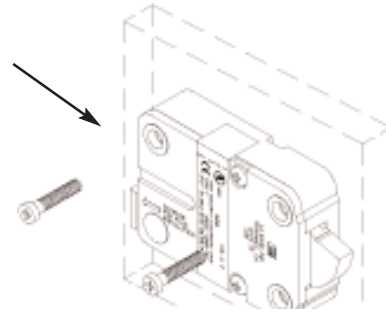


Figure 5

**RELOCK BRACKETS (P/N 3188):** These extension brackets make up for the reduced body thickness of the Dual-Handed Swingbolt and allow use of the original relock trigger plate without modifications, see Figure 4.

- ③ Making sure that the entry cable is running through the notch at the back of the lock. Mount the lock with the three (3) US 1/4”-20 or M6 mounting screws provided, see Figure 5.

**NOTE:** All four mounting orientations are possible.

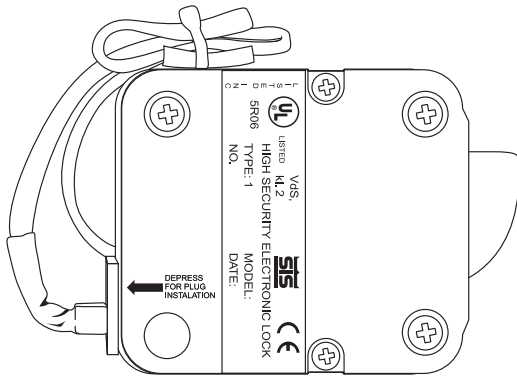


Figure 6

- ④ Secure entry cable with tywrap, making sure to keep out of the way of all moving parts, see Figure 6.